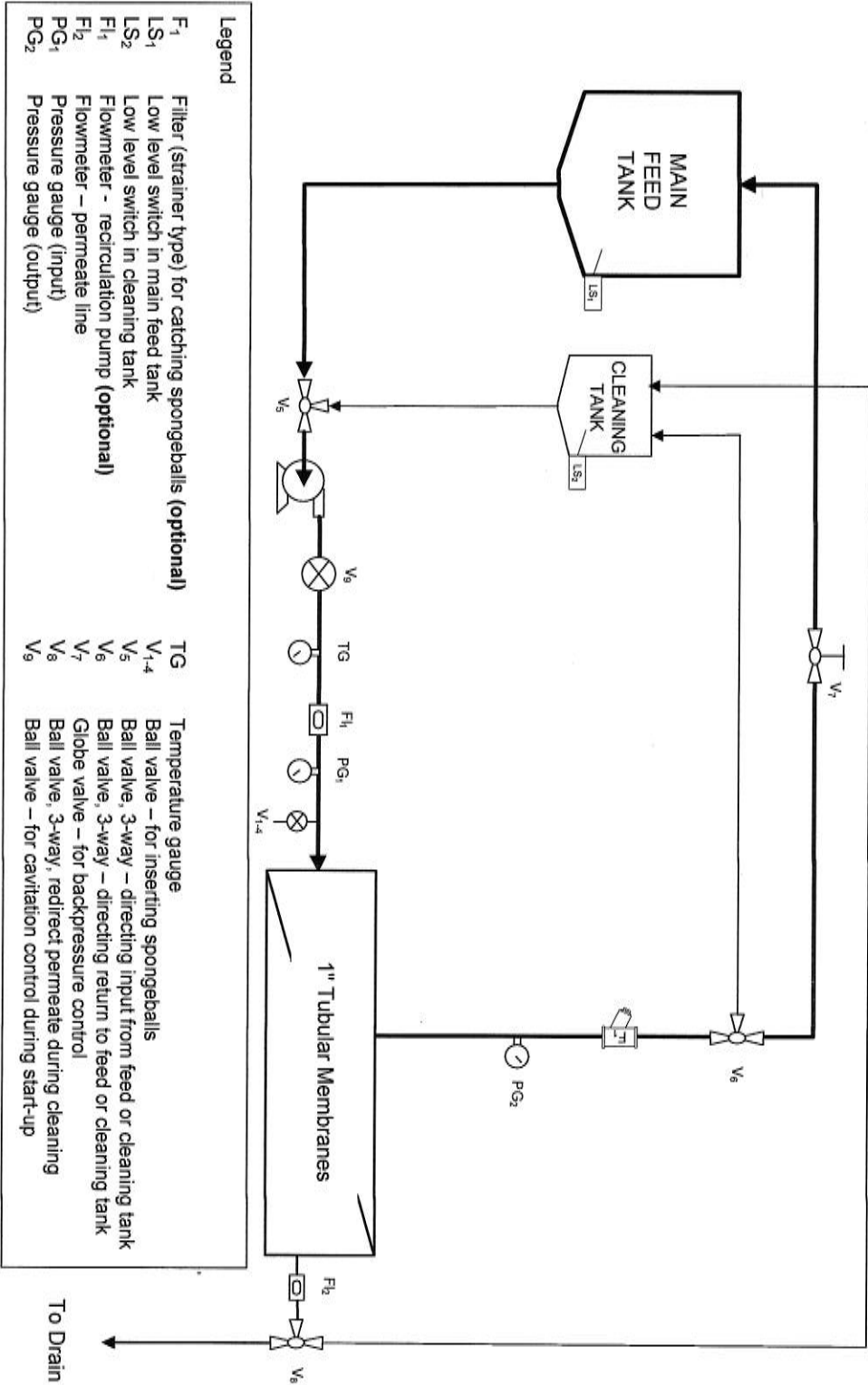


1" TUBULAR ULTRA-FILTRATION SYSTEM

(Designs vary depending on system size)

Prepared by: Filtration Systems Inc.
 Date: March 26, 2012



- Legend**
- F₁ Filter (strainer type) for catching spongeballs (optional)
 - LS₁ Low level switch in main feed tank
 - LS₂ Low level switch in cleaning tank
 - FI₁ Flowmeter - recirculation pump (optional)
 - FI₂ Flowmeter - permeate line
 - PG₁ Pressure gauge (input)
 - PG₂ Pressure gauge (output)

- TG Temperature gauge
- V₁₋₄ Ball valve - for inserting spongeballs
- V₅ Ball valve, 3-way - directing input from feed or cleaning tank
- V₆ Ball valve, 3-way - directing return to feed or cleaning tank
- V₇ Globe valve - for backpressure control
- V₈ Ball valve, 3-way, redirect permeate during cleaning
- V₉ Ball valve - for cavitation control during start-up

To Drain

MEMBRANE MODULE – S22 SERIES

