



# TurboClean® High Temp UF Elements

MANN+HUMMEL Water & Fluid Solutions offers TurboClean® High Temperature elements for all of our membranes capable of continuous operation at temperature up to 80°C. These elements feature a patented sanitary hard-shell design that delivers better system performance due to about 60% less bypass flow than other sanitary elements. TurboClean elements are stronger than net-wrapped sanitary elements and are able to withstand higher pressure drops. And with the tightest OD tolerance and optimal circularity, TurboClean elements are the easiest elements to load and unload.

- Strongest Sanitary Element
- Longer Operating Life
- Better Performance
- Most Effective Cleaning
- Easiest Installation

## MEMBRANE CHARACTERISTICS

Membrane	Membrane Type	Nominal M.W.C.O (Da)
UF5	Polyethersulfone (PES)	5,000
UF10	Polyethersulfone (PES)	10,000

## DESIGN INFORMATION

Model	Membrane Area m <sup>2</sup> (ft <sup>2</sup> )	Feed Spacer Thickness (mil) <sup>a</sup>
TurboClean® HT 3838-UF5-46	5.2 (54)	46
TurboClean® HT 4040-UF5-47P	5.6 (60)	47
TurboClean® HT 8040-UF5-47P	26.5 (285)	47
TurboClean® HT 4040-UF10-47P	5.6 (60)	47
TurboClean® HT 8040-UF10-47P	26.5 (285)	47

<sup>a</sup> All models on this sheet have TurboClean sanitary outer wrap. The 47 mil spacer is a parallel shaped feed spacer; the 46 mil spacer is a diamond shaped feed spacer. All 4040 and 8040 models include anti-telescoping devices (ATDs) attached to the ends of the element and one interconnector.

## OPERATING PARAMETERS

Maximum Operating Temperature	80°C (176°F)
Maximum Operating Pressure	6.9 bar (100 psi) at 80°C (176°F)
Cleaning pH Range <sup>1</sup>	1.0 - 12.0
Chlorine Tolerance	200 ppm (sanitization) at pH ≥ 10.5
Maximum Pressure Drop at 30°C	1.4 bar (20 psi) per element; 6 bar (80 psi) per housing
Maximum Pressure Drop at 70°C	0.3 bar (5 psi) per element; 1.4 bar (20 psi) per housing

<sup>1</sup> Refer to temperature and pH limits in our Membrane Cleaning Guides.

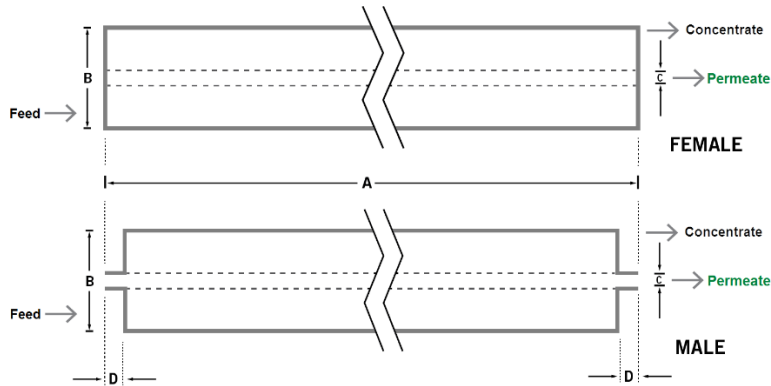
PHYSICAL DIMENSIONS

Model	Element Weight kg (lb) <sup>b</sup>	Dim. A mm (inches)	Dim. B mm (inches)	Dim. C <sup>c</sup> mm (inches)	Permeate Tube <sup>d</sup>
TurboClean® HT 3838-UF5-46	4 (9)	965 (38.0)	96 (3.8)	21.2 (0.83)	Female
TurboClean® HT 4040-UF5-47P	4 (9)	1,016 (40.0)	99 (3.9)	19.1 (0.75)	Male
TurboClean® HT 8040-UF5-47P	16 (36)	1,016 (40.0)	201 (7.9)	28.6 (1.125)	Female
TurboClean® HT 4040-UF10-47P	4 (9)	1,016 (40.0)	99 (3.9)	19.1 (0.75)	Male
TurboClean® HT 8040-UF10-47P	16 (36)	1,016 (40.0)	201 (7.9)	28.6 (1.125)	Female

<sup>b</sup> Shipping weight is dependent on packaging material and quantity shipped.

<sup>c</sup> Diameters for Dimension "C" are as follows. For Female elements, "C" is the Inner Diameter. For Male elements, "C" is the Outer Diameter.

<sup>d</sup> Male elements have a protruding permeate tube, indicated as "D" in the diagram. Dimension "D" is 25.4 mm (1.0 in).



IMPORTANT INFORMATION

**Start-up:** MANN+HUMMEL Water & Fluid Solutions recommends flushing elements for 30 minutes at low pressure and discarding permeate during the flush prior to operation. For a more detailed start-up procedure, please see Element Start-Up Guide – System Start-Up (TSG-O-005).

**Cleaning:** TurboClean® membrane elements must be cleaned periodically to ensure proper operation and to prevent membrane damage. Please see our Membrane Cleaning Guides.

**Storage:** TurboClean membrane elements must be stored appropriately to ensure proper operation and to prevent membrane damage. Please see Element Storage Guides (TSG-O-009 & TSG-O-010).

**Regulatory:** All models on this sheet use FDA (CFR Title 21) compliant materials, comply with EU regulation (EC) No. 1935/2004 and No. 10/2011, and have Halal and Kosher certifications. All 38 inch long models conform to USDA 3A sanitary standard 45-03.

CUSTOMIZABLE SPECIALTY ELEMENTS

MANN+HUMMEL Water & Fluid Solutions offers a full range of membranes and element designs for challenging water and process applications. Technologies include low-fouling RO, submerged UF, continuous high temperature, ultra-high pressure, unique sanitary designs and more. Contact us to customize a product that satisfies your specific requirements.

Contact

Europe

Germany: +49 611 962 6001  
Italy: +39 0721 1796201  
info@microdyn-nadir.com

Americas

USA: +1 805 964 8003  
sales.mnus@microdyn-nadir.com

Asia

Singapore: +65 6457 7533  
China: +86 10 8413 9860  
waterchina@mann-hummel.com