



TRISEP® 4040-S2E1A1

High Pressure RO Element

The TRISEP® 4040-S2E1A1 element has a maximum operating pressure of 82.7 bar (1,200 psi) and is versatile enough to be used in a wide variety of water purification applications. TRISEP membrane is available in numerous strong and durable spiral-wound element designs that may be customized to meet customer requirements.

MEMBRANE CHARACTERISTICS

Membrane	HP-RO
Membrane Type	Polyamide
Stabilized Salt Rejection (%)	99.7
Minimum Salt Rejection (%)	99.5

DESIGN INFORMATION

Model	Membrane Area m² (ft²)	Feed Spacer Thickness (mil)^a
TRISEP® 4040-S2E1A1	7.4 (80)	28

^a This model has a fiberglass outer wrap and diamond-shaped feed spacers. This model includes anti-telescoping devices (ATDs) attached to the ends of the element and one brine seal.

OPERATING PARAMETERS

Maximum Operating Pressure	82.7 bar (1,200 psi)
Maximum Operating Temperature	45°C (140°F)
Cleaning pH Range¹	1.0 - 12.0
Chlorine Tolerance²	< 0.1 ppm
Maximum Pressure Drop	1 bar (15 psi) per element; 4 bar (60 psi) per housing

¹ Refer to temperature and pH limits in our Membrane Cleaning Guides.

² Pretreatment is recommended for the removal of free chlorine and other oxidizing agents to prevent damage to membranes. Oxidizing agents, such as free chlorine, in contact with polyamide membranes may result in shortened operating life or membrane failure. Such oxidation damage is excluded from warranty. Refer to Membrane Operating Guide - Recommendations for Water Purification (TSG-O-012).

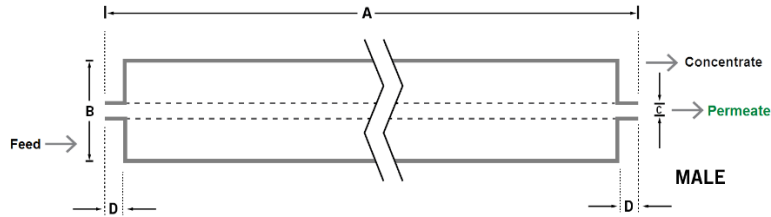
PHYSICAL DIMENSIONS

Model	Element Weight kg (lb) ^b	Dim. A mm (inches)	Dim. B mm (inches)	Dim. C ^c mm (inches)	Permeate Tube ^d
TRISEP® 4040-S2E1A1	4 (9)	1,016 (40.0)	99 (3.9)	19.1 (0.75)	Male

b Shipping weight is dependent on packaging material and quantity shipped.

c Dimension "C" is the Outer Diameter.

d Male elements have a protruding permeate tube, indicated as "D" in the diagram. Dimension "D" is 25.4 mm (1.0 in).



IMPORTANT INFORMATION

Start-up: MANN+HUMMEL Water & Fluid Solutions recommends flushing elements for 30 minutes at low pressure and discarding permeate during the flush prior to operation. For a more detailed start-up procedure, please see Element Start-Up Guide – System Start-Up (TSG-O-005).

Cleaning: TRISEP® membrane elements must be cleaned periodically to ensure proper operation and to prevent membrane damage. Please see our Membrane Cleaning Guides.

Storage: TRISEP membrane elements must be stored appropriately to ensure proper operation and to prevent membrane damage. Please see Element Storage Guides (TSG-O-009 & TSG-O-010).

CUSTOMIZABLE SPECIALTY ELEMENTS

MANN+HUMMEL Water & Fluid Solutions offers a full range of membranes and element designs for challenging water and process applications. Technologies include low-fouling RO, submerged UF, continuous high temperature, ultra-high pressure, unique sanitary designs and more. Contact us to customize a product that satisfies your specific requirements.

Contact

Europe

Germany: +49 611 962 6001
Italy: +39 0721 1796201
info@microdyn-nadir.com

Americas

USA: +1 805 964 8003
sales.mnus@microdyn-nadir.com

Asia

Singapore: +65 6457 7533
China: +86 10 8413 9860
waterchina@mann-hummel.com