



TRISEP® 2540-P3ETF3

Cellulose Acetate Element for Ethanol Applications

The TRISEP® 2540-P3ETF3 utilizes a cellulose acetate NF membrane, stainless steel core tube and robust plastics that are durable enough to withstand high concentrations of ethanol in the feed stream. TRISEP® SBNF membrane elements offer excellent organic removal along with the stable operation, cleanability and long life of proven cellulose acetate chemistry.

MEMBRANE CHARACTERISTICS

Membrane	SBNF
Molecular Weight Cutoff (Da)	2,000

DESIGN INFORMATION

Model	Permeate Flow m³/day (GPD)^a	Membrane Area m² (ft²)	Feed Spacer Thickness (mil)^b
TRISEP® 2540-P3ETF3	4.7 (1,250)	2.4 (26)	31

a Test conditions: 2,000 ppm NaCl, 9.7 bar (140 psi), 25°C (77°F), 15% recovery, pH 5.5, 30 minutes operation. Flow rates will be no more than 15% below the values shown. Product specifications may change without notice as design revisions occur.

b This model has a fiberglass outer wrap and diamond shaped feed spacers. This model includes anti-telescoping devices (ATDs) attached to the ends of the element and one brine seal.

OPERATING PARAMETERS

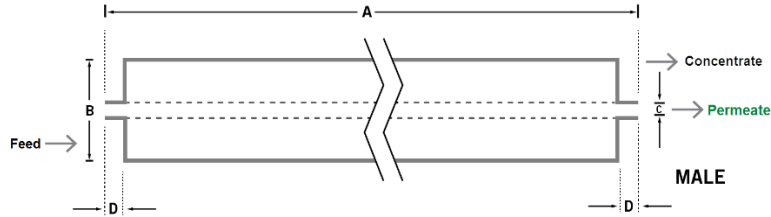
Maximum Operating Pressure	21 bar (300 psi)
Maximum Operating Temperature	32°C (90°F)
Cleaning pH Range¹	2.0 - 7.5
Chlorine Tolerance²	0.5 ppm nominal, 1 ppm max
Maximum Pressure Drop	1 bar (15 psi) per element; 4 bar (60 psi) per housing
Maximum SDI₁₅	5.0
Maximum Turbidity	1 NTU

¹ Refer to temperature and pH limits in Membrane Cleaning Guide - Cellulose Acetate Elements (TSG-C-005).

PHYSICAL DIMENSIONS

Model	Element Weight kg (lb) ^c	Dim. A mm (inches)	Dim. B mm (inches)	Dim. C ^d mm (inches)	Permeate Tube
TRISEP® 2540-O9ETF3	3 (7)	1,016 (40.0)	64 (2.5)	19.1 (0.75)	Male

^c Shipping weight is dependent on packaging material and quantity shipped.
^d Dimension "C" is the Outer Diameter.



IMPORTANT INFORMATION

- Start-up:** MANN+HUMMEL Water & Fluid Solutions recommends flushing elements for 30 minutes at low pressure and discarding permeate during the flush prior to operation. For a more detailed start-up procedure, please see Element Start-Up Guide – System Start-Up (TSG-O-005).
- Cleaning:** TRISEP® membrane elements must be cleaned periodically to ensure proper operation and to prevent membrane damage. Please see Membrane Cleaning Guide – Cellulose Acetate Elements (TSG-C-005).
- Storage:** TRISEP membrane elements must be stored appropriately to ensure proper operation and to prevent membrane damage. Please see Element Storage Guides (TSG-O-009 & TSG-O-010).

CUSTOMIZABLE SPECIALTY ELEMENTS

MANN+HUMMEL Water & Fluid Solutions offers a full range of membranes and element designs for challenging water and process applications. Technologies include low-fouling RO, submerged UF, continuous high temperature, ultra-high pressure, unique sanitary designs and more. Contact us to customize a product that satisfies your specific requirements.

Contact

Europe
 Germany: +49 611 962 6001
 Italy: +39 0721 1796201
 info@microdyn-nadir.com

Americas
 USA: +1 805 964 8003
 sales.mnus@microdyn-nadir.com

Asia
 Singapore: +65 6457 7533
 China: +86 10 8413 9860
 waterchina@mann-hummel.com