



TRISEP® SBUF

Cellulose Acetate (CA)

UF Elements

TRISEP® SBUF is a cellulose acetate / triacetate ultrafiltration membrane used for color removal and reduction of TOC in streams high in natural organic matter (NOM), all while operating at extremely low pressure. SBUF is a direct replacement for older Koch and Fluid Systems® ROGA® UF elements and offers the stable operation, cleanability, and long life of proven cellulose acetate chemistry.

MEMBRANE CHARACTERISTICS

Membrane	SBUF
Nominal M.W.C.O. (Da)	8,000

DESIGN INFORMATION

Model	Part Number	Permeate Flow m ³ /day (GPD) ^a	Membrane Area m ² (ft ²)	Feed Spacer Thickness (mil) ^b
TRISEP® 2540-SBUF-TSF	151080252	3.8 (1,000)	2.4 (26)	31
TRISEP® 4040-SBUF-TSF	151080442	15.9 (4,200)	7.4 (80)	31
TRISEP® 8040-SBUF-TSA	151080842	47.3 (12,500)	30.2 (325)	31

a Test conditions: 2,000 ppm NaCl, 4.8 bar (70 psi), 25°C (77°F), 15% recovery, pH 5.5, 30 minutes operation. Flow rates will be no more than 15% below the values shown. Product specifications may change without notice as design revisions occur.

b All models on this sheet have fiberglass outer wrap and diamond shaped feed spacers.

OPERATING PARAMETERS

Maximum Operating Pressure	21 bar (300 psi)
Maximum Operating Temperature	32°C (90°F)
Nominal Operating pH	5.5
Cleaning pH Range¹	2.0 - 7.5
Chlorine Tolerance	0.5 ppm nominal, 1 ppm max
Maximum Pressure Drop	1 bar (15 psi) per element; 4 bar (60 psi) per housing
Maximum SDI₁₅	5.0
Maximum Turbidity	1 NTU

¹ Refer to pH limits in Membrane Cleaning Guide - Cellulose Acetate Elements (TSG-C-005).

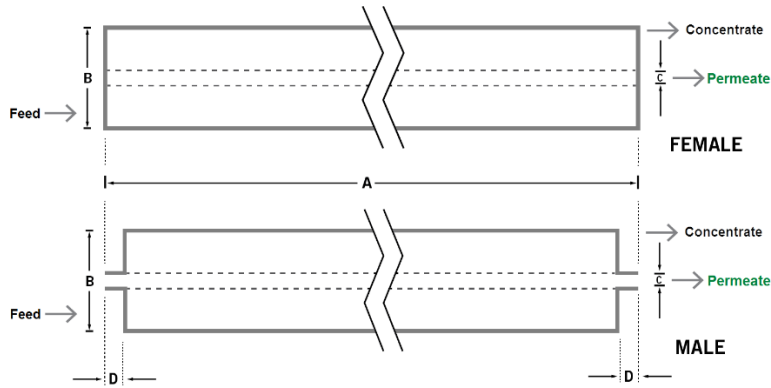
PHYSICAL DIMENSIONS

Model	Element Weight kg (lb) ^c	Dim. A mm (inches)	Dim. B mm (inches)	Dim. C ^d mm (inches)	Permeate Tube ^e
TRISEP® 2540-SBUF-TSF	3 (7)	1,016 (40.0)	64 (2.5)	19.1 (0.75)	Male
TRISEP® 4040-SBUF-TSF	4 (9)	1,016 (40.0)	99 (3.9)	19.1 (0.75)	Male
TRISEP® 8040-SBUF-TSA	16 (36)	1,016 (40.0)	201 (7.9)	38.1 (1.50)	Female

^c Shipping weight is dependent on packaging material and quantity shipped.

^d Diameters for Dimension "C" are as follows. For Female elements, "C" is the Inner Diameter. For Male elements, "C" is the Outer Diameter.

^e Male elements have a protruding permeate tube, indicated as "D" in the diagram. Dimension "D" is 25.4 mm (1.0 in).



IMPORTANT INFORMATION

- Start-up:** MANN+HUMMEL Water & Fluid Solutions recommends flushing elements for 30 minutes at low pressure and discarding permeate during the flush prior to operation. For a more detailed start-up procedure, please see Element Start-Up Guide – System Start-Up (TSG-O-005).
- Cleaning:** TRISEP® membrane elements must be cleaned periodically to ensure proper operation and to prevent membrane damage. Please see Membrane Cleaning Guide – Cellulose Acetate Elements (TSG-C-005).
- Storage:** TRISEP membrane elements must be stored appropriately to ensure proper operation and to prevent membrane damage. Please see Element Storage Guides (TSG-O-009 & TSG-O-010).

CUSTOMIZABLE SPECIALTY ELEMENTS

MANN+HUMMEL Water & Fluid Solutions offers a full range of membranes and element designs for challenging water and process applications. Technologies include low-fouling RO, submerged UF, continuous high temperature, ultra-high pressure, unique sanitary designs and more. Contact us to customize a product that satisfies your specific requirements.

Contact

Europe
 Germany: +49 611 962 6001
 Italy: +39 0721 1796201
 info@microdyn-nadir.com

Americas
 USA: +1 805 964 8003
 sales.mnus@microdyn-nadir.com

Asia
 Singapore: +65 6457 7533
 China: +86 10 8413 9860
 waterchina@mann-hummel.com