

# ProCEM

## MCE 1200-41-037-030



### MEMBRANE

	Technical Specifications
<b>Membrane length</b>	1200 mm
<b>Outer diameter MCE</b>	41 mm
<b>Inner diameter channel</b>	3.8 mm
<b>Pore size/MWCO</b>	30 nm
<b>Number of channels</b>	37
<b>Support material</b>	Al <sub>2</sub> O <sub>3</sub>
<b>Coating material</b>	Al <sub>2</sub> O <sub>3</sub>
<b>Membrane surface</b>	0.53 m <sup>2</sup>
<b>Cross section area</b>	419.6 mm <sup>2</sup>
<b>Weight</b>	2.9 kg
<b>Clean water flux</b>	400 LMH @ 25 °C

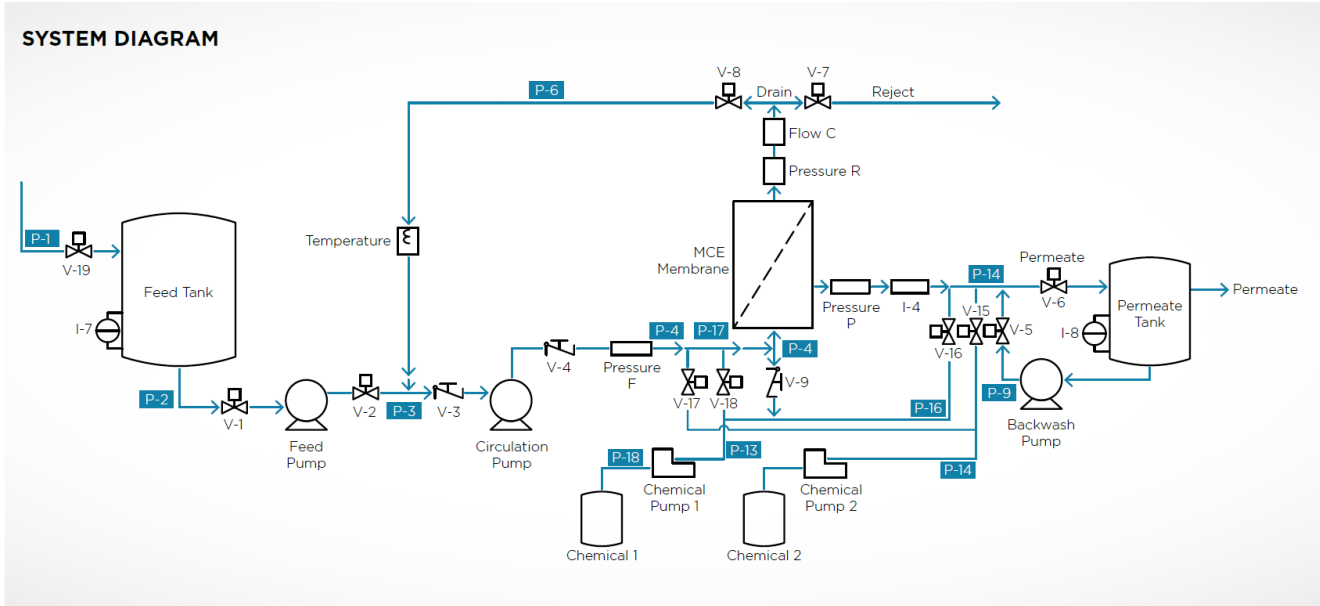


### HOUSING AND SEALING

	Technical Specifications
<b>Housing length</b>	1209 mm
<b>Housing diameter</b>	168.3 mm
<b>Housing material</b>	316 Ti
<b>Number of membranes</b>	6
<b>Total membrane surface</b>	3.18 m <sup>2</sup>
<b>Total cross section area</b>	2517.74 mm <sup>2</sup>
<b>Permeate connection</b>	2 x 1" Victaulic
<b>Feed &amp; retentate connection</b>	2 x 6" Victaulic
<b>Weight</b>	32.5 kg
<b>Membrane sealing diameter</b>	Ø 41 x 3.5 mm
<b>Membrane sealing material</b>	EPDM, NBR, Viton, PTFE, Silicone

**OPERATION SPECIFICATION**

	<b>ProCEM MCE 1200-41-037-030</b>
<b>Temperature</b>	5 – 100 °C
<b>pH</b>	0 – 14
<b>System pressure</b>	0 – 10 bar
<b>Transmembrane pressure</b>	Max. 20 bar
<b>Volume flow</b>	18 – 55 m <sup>3</sup> /h
<b>Cross flow velocity</b>	2 – 6 m/s
<b>Backwash pressure</b>	Max. 5 bar
<b>Backwash flow</b>	4 – 10 m <sup>3</sup> /h
<b>Cleaning agents</b>	NaOCl, NaOH, citric acid
<b>Cleaning frequency</b>	Every 2 – 4 weeks



MANN+HUMMEL WFS reserves the right to change specifications without prior notification.

## Contact

**Europe**  
 Germany: +49 611 962 6001  
 Italy: +39 0721 1796201  
 info.wfs@mann-hummel.com

**Americas**  
 USA: +1 805 964 8003  
 sales.mnus@microdyn-nadir.com

**Asia**  
 Singapore: +65 6457 7533  
 China: +86 10 8413 9860  
 waterchina@mann-hummel.com