

MAXIDYN™

1" Tubular Modules

The compact and lightweight MAXIDYN™ tubular modules are best suited for filtering solutions with high levels of suspended solids. These modules are available with polyethersulfone (PES) or polyvinylidene fluoride (PVDF) membrane and with a variety of molecular weight cut-offs (MWCO).

Flexible treatments options are possible with MAXIDYN modules - the tubes can be arranged in parallel or series in the MAXIDYN tubular modules depending on process or system requirements. Designs in series are best suited for low feed volumes, while parallel designs allow for treatment of solutions with a high fouling potential. With ready-to-mount connections and a simple design, MAXIDYN offers a plug and play treatment solution with quick and easy installation.

MEMBRANE CHARACTERISTICS

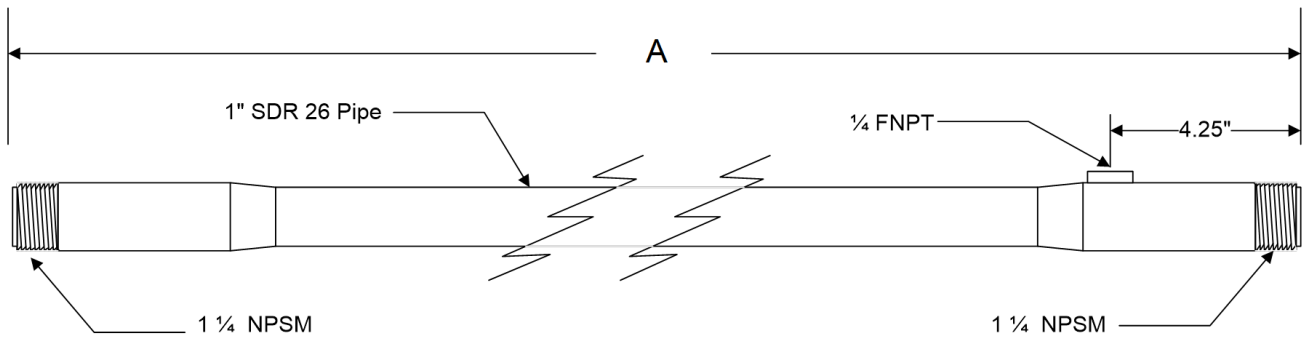
Model	Membrane Material	M.W.C.O. (kDa)	Membrane Tube Inner Diameter	Membrane Area
FS 1 TM-251-PVO	PVDF	150	25.3 mm (0.998 inch)	0.1 m ² (1.1 ft ²)
FS 1 TM-251-GVO	PVDF	150	25.3 mm (0.998 inch)	0.1 m ² (1.1 ft ²)
FS 1 TM-887-PVO	PVDF	70	25.3 mm (0.998 inch)	0.1 m ² (1.1 ft ²)
FS 1 TM-887-GVO	PVDF	70	25.3 mm (0.998 inch)	0.1 m ² (1.1 ft ²)
FS 1 TM-522-PVO	PES	20	25.3 mm (0.998 inch)	0.1 m ² (1.1 ft ²)
FS 1 TM-522-GVO	PES	20	25.3 mm (0.998 inch)	0.1 m ² (1.1 ft ²)
FS 1 TM-587-PVO	PES	100	25.3 mm (0.998 inch)	0.1 m ² (1.1 ft ²)
FS 1 TM-587-GVO	PES	100	25.3 mm (0.998 inch)	0.1 m ² (1.1 ft ²)
FS 3 TM-251-PVO	PVDF	150	25.3 mm (0.998 inch)	0.2 m ² (2.2 ft ²)
FS 3 TM-251-GVO	PVDF	150	25.3 mm (0.998 inch)	0.2 m ² (2.2 ft ²)
FS 3 TM-887-PVO	PVDF	70	25.3 mm (0.998 inch)	0.2 m ² (2.2 ft ²)
FS 3 TM-887-GVO	PVDF	70	25.3 mm (0.998 inch)	0.2 m ² (2.2 ft ²)
FS 3 TM-522-PVO	PES	20	25.3 mm (0.998 inch)	0.2 m ² (2.2 ft ²)
FS 3 TM-522-GVO	PES	20	25.3 mm (0.998 inch)	0.2 m ² (2.2 ft ²)
FS 3 TM-587-PVO	PES	100	25.3 mm (0.998 inch)	0.2 m ² (2.2 ft ²)
FS 3 TM-587-GVO	PES	100	25.3 mm (0.998 inch)	0.2 m ² (2.2 ft ²)

OPERATING PARAMETERS

Minimum Feed Flowrate	4.5 m ³ /hr (20 gal/min)
Maximum Feed Flowrate	11.4 m ³ /hr (50 gal/min)
Maximum Feed Pressure	5.5 bar (80 psi)
Burst Pressure	13.5 bar (200 psi)
Minimum Exit Pressure	1 bar (15 psi)
Pressure Drop per Tube	FS1 models: 4 psi @ 20 gal/min FS3 models: 5 psi @ 30 gal/min 9 psi @ 40 gal/min 12 psi @ 50 gal/min
Maximum Operating Temperature	PVO models: 60°C (140°F) GVO models: 71°C (160°F)
Maximum Cleaning Temperature	PVO models: 60°C (140°F) GVO models: 82°C (180°F)
Operating pH Range	2 – 11
Maximum Feed FOG Concentration	50%
Maximum Feed TSS Concentration	80%
Prefiltration Requirement	3,500 µm or smaller

MATERIALS & DIMENSIONS

PVO Models:



PVO Model Type	Housing	Dimension A
FS1 Models	C-PVC	54 1/4 in (1378 mm)
FS3 Models	C-PVC	112 13/16 in (2865 mm)

GVO Models*:

GVO Model Type	Housing	Sealing	Tube Length	Tube Outer Diameter
FS1 Models	None	Boot Seal Required	54 1/4 in (1378 mm)	0.89 in (22.6 mm)
FS3 Models	None	Boot Seal Required	109.0 in (2769 mm)	0.89 in (22.6 mm)

*The drawing above does not apply to GVO models. GVO models do not have a housing.

CUSTOMIZABLE SPECIALTY ELEMENTS

MANN+HUMMEL Water & Fluid Solutions offers a full range of membranes and element designs for challenging water and process applications. Technologies include low-fouling RO, submerged UF, continuous high temperature, ultra-high pressure, unique sanitary designs and more. Contact us to customize a product that satisfies your specific requirements.

Contact

Europe

Germany: +49 611 962 6001
 Italy: +39 0721 1796201
 info@microdyn-nadir.com

Americas

USA: +1 805 964 8003
 sales.mnus@microdyn-nadir.com

Asia

Singapore: +65 6457 7533
 China: +86 10 8413 9860
 waterchina@mann-hummel.com