



# TRISEP® 8040-SBUF-DWI

## DWI Certified CA

## UF Elements

TRISEP® SBUF is a cellulose acetate / triacetate ultrafiltration membrane used for color removal and reduction of TOC in streams high in natural organic matter (NOM), all while operating at extremely low pressure. SBUF is a direct replacement for older Koch and Fluid Systems® ROGA® UF elements and offers the stable operation, cleanability, and long life of proven cellulose acetate chemistry. The 8040-SBUF is certified for use in drinking water applications in the U.K. by the Drinking Water Inspectorate (DWI).

### MEMBRANE CHARACTERISTICS

<b>Membrane</b>	SBUF
<b>Membrane Type</b>	Cellulose Acetate
<b>Nominal M.W.C.O. (Da)</b>	8,000

### DESIGN INFORMATION

Model	Part Number	Permeate Flow m <sup>3</sup> /day (GPD) <sup>a</sup>	Membrane Area m <sup>2</sup> (ft <sup>2</sup> )	Feed Spacer Thickness (mil) <sup>b</sup>
TRISEP® 8040-SBUF-DWI	151081842	47.3 (12,500)	30.2 (325)	31

a Test conditions: 2,000 ppm NaCl, 9.7 bar (140 psi), 25°C (77°F), 15% recovery, pH 5.5, 30 minutes operation. Flow rates will be no more than 15% below the values shown. Product specifications may change without notice as design revisions occur.  
 b All models on this sheet have fiberglass outer wrap and diamond shaped feed spacers. All models on this sheet include anti-telescoping devices (ATDs) attached to the ends of the element and one brine seal.

### OPERATING PARAMETERS

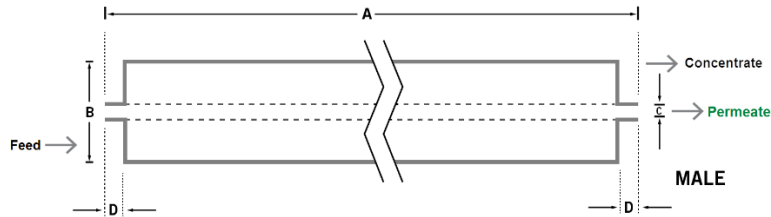
<b>Maximum Operating Pressure</b>	21 bar (300 psi)
<b>Maximum Operating Temperature</b>	32°C (90°F)
<b>Nominal Operating pH</b>	5.5
<b>Cleaning pH Range<sup>1</sup></b>	2.0 – 7.5
<b>Chlorine Tolerance</b>	0.5 ppm nominal, 1 ppm max
<b>Maximum Pressure Drop</b>	1 bar (15 psi) per element; 4 bar (60 psi) per housing
<b>Maximum SDI<sub>15</sub></b>	5.0
<b>Maximum Turbidity</b>	1 NTU

<sup>1</sup> Refer to pH limits in Membrane Cleaning Guide – Cellulose Acetate Elements (TSG-C-005).

**PHYSICAL DIMENSIONS**

Model	Element Weight kg (lb) <sup>c</sup>	Dim. A mm (inches)	Dim. B mm (inches)	Dim. C <sup>d</sup> mm (inches)	Permeate Tube
TRISEP® 8040-SBUF-DWI	16 (36)	1,016 (40.0)	201 (7.9)	38.1 (1.50)	Female

<sup>c</sup> Shipping weight is dependent on packaging material and quantity shipped.  
<sup>d</sup> Diameter "C" is the Inner Diameter.



**IMPORTANT INFORMATION**

- Start-up:** MANN+HUMMEL Water & Fluid Solutions recommends flushing elements for 30 minutes at low pressure and discarding permeate during the flush prior to operation. For a more detailed start-up procedure, please see Element Start-Up Guide – System Start-Up (TSG-O-005).
- Cleaning:** TRISEP® membrane elements must be cleaned periodically to ensure proper operation and to prevent membrane damage. Please see Membrane Cleaning Guide – Cellulose Acetate Elements (TSG-C-005).
- Storage:** TRISEP membrane elements must be stored appropriately to ensure proper operation and to prevent membrane damage. Please see Element Storage Guides (TSG-O-009 & TSG-O-010).

**CUSTOMIZABLE SPECIALTY ELEMENTS**

MANN+HUMMEL Water & Fluid Solutions offers a full range of membranes and element designs for challenging water and process applications. Technologies include low-fouling RO, submerged UF, continuous high temperature, ultra-high pressure, unique sanitary designs and more. Contact us to customize a product that satisfies your specific requirements.

**Contact**

**Europe**  
 Germany: +49 611 962 6001  
 Italy: +39 0721 1796201  
 info@microdyn-nadir.com

**Americas**  
 USA: +1 805 964 8003  
 sales.mnus@microdyn-nadir.com

**Asia**  
 Singapore: +65 6457 7533  
 China: +86 10 8413 9860  
 waterchina@mann-hummel.com