



TRISEP® 8040-SBNF-DWI

DWI Certified CA

NF Elements

TRISEP® SBNF is a cellulose acetate / triacetate nanofiltration membrane used for color removal and reduction of TOC in streams high in natural organic matter (NOM), all while operating at low pressure. SBNF membrane offers the stable operation, cleanability, and long life of proven cellulose acetate chemistry. The 8040-SBNF-DWI element is approved for use in drinking water applications in the U.K. by the Drinking Water Inspectorate (DWI).

MEMBRANE CHARACTERISTICS

Membrane	SBNF
Membrane Type	Cellulose Acetate
Nominal M.W.C.O. (Da)	2,000

DESIGN INFORMATION

Model	Part Number	Permeate Flow m ³ /day (GPD) ^a	Membrane Area m ² (ft ²)	Feed Spacer Thickness (mil) ^b
TRISEP® 8040-SBNF-DWI	151091842	68.1 (18,000)	30.2 (325)	31

a Test conditions: 2,000 ppm NaCl, 9.7 bar (140 psi), 25°C (77°F), 15% recovery, pH 5.5, 30 minutes operation. Flow rates will be no more than 15% below the values shown. Product specifications may change without notice as design revisions occur.

b This model has fiberglass outer wrap and diamond shaped feed spacers. This model includes anti-telescoping devices (ATDs) attached to the ends of the element, one brine seal, and one interconnector.

OPERATING PARAMETERS

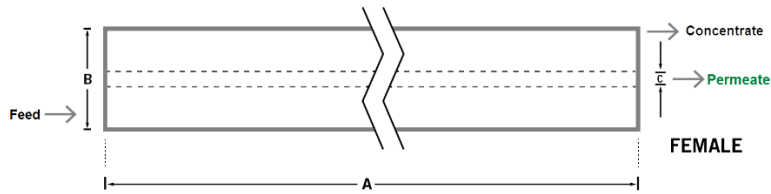
Maximum Operating Pressure	21 bar (300 psi)
Maximum Operating Temperature	32°C (90°F)
Nominal Operating pH	5.5
Cleaning pH Range¹	2.0 - 7.5
Chlorine Tolerance	0.5 ppm nominal, 1 ppm max
Maximum Pressure Drop	1 bar (15 psi) per element; 4 bar (60 psi) per housing
Maximum SDI₁₅	5.0
Maximum Turbidity	1 NTU

¹ Refer to pH limits in Membrane Cleaning Guide - Cellulose Acetate Elements (TSG-C-005).

PHYSICAL DIMENSIONS

Model	Element Weight kg (lb) ^c	Dim. A mm (inches)	Dim. B mm (inches)	Dim. C ^d mm (inches)	Permeate Tube
TRISEP® 8040-SBNF-DWI	16 (36)	1,016 (40.0)	201 (7.9)	38.1 (1.50)	Female

^c Shipping weight is dependent on packaging material and quantity shipped.
^d Diameter "C" is the Inner Diameter.



IMPORTANT INFORMATION

- Start-up:** MANN+HUMMEL Water & Fluid Solutions recommends flushing elements for 30 minutes at low pressure and discarding permeate during the flush prior to operation. For a more detailed start-up procedure, please see Element Start-Up Guide – System Start-Up (TSG-O-005).
- Cleaning:** TRISEP® membrane elements must be cleaned periodically to ensure proper operation and to prevent membrane damage. Please see Membrane Cleaning Guide – Cellulose Acetate Elements (TSG-C-005).
- Storage:** TRISEP membrane elements must be stored appropriately to ensure proper operation and to prevent membrane damage. Please see Element Storage Guides (TSG-O-009 & TSG-O-010).

CUSTOMIZABLE SPECIALTY ELEMENTS

MANN+HUMMEL Water & Fluid Solutions offers a full range of membranes and element designs for challenging water and process applications. Technologies include low-fouling RO, submerged UF, continuous high temperature, ultra-high pressure, unique sanitary designs and more. Contact us to customize a product that satisfies your specific requirements.

Contact

Europe
 Germany: +49 611 962 6001
 Italy: +39 0721 1796201
 info@microdyn-nadir.com

Americas
 USA: +1 805 964 8003
 sales.mnus@microdyn-nadir.com

Asia
 Singapore: +65 6457 7533
 China: +86 10 8413 9860
 waterchina@mann-hummel.com